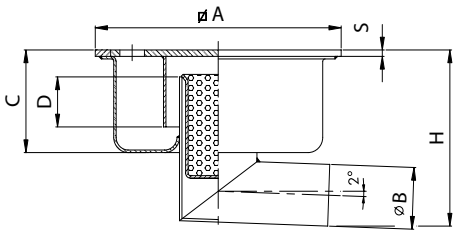


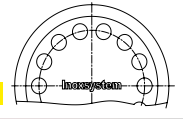
made of grade 304 stainless steel - grade 316 on request

**Standard and low profile floor drains with square top plate, horizontal outlet and removable separated filter basket (after odor trap).**



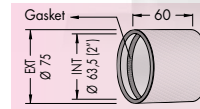
Dwg. No. 0010

N.B. - Round top cover on request **Art. pt.**  
- See page 30 for other cover patterns **Art. ptf.**



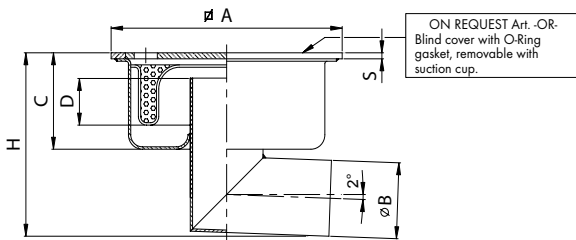
Article	DIMENSIONS IN mm						FLOW RATE lt/min	LOAD CAPACITY IN Kg		
	Ø A	S	Ø B	C	D	H		CONCENTRATED LOAD	DISTRIBUTED LOAD	
R-Low profile										
40 L 106	100	6	40	40	15	85	18	1000	10000	
50 L 156	150	6	50	50	20	105	40	1000	10000	
R 50 L 206	200	6	50	50	20	105	50	1000	10000	Low profile
R 63 L 206	200	6	63	50	20	115	60	1000	10000	Low profile
63 L 206	200	6	63	75	40	140	60	1000	10000	
80 L 256	250	6	80	110	50	200	80	950	8500	
R 104 L 256	250	6	104	60	20	175	135	950	8500	Low profile
104 L 256	250	6	104	110	50	230	135	950	8500	
104 L 256	250	8	104	110	50	230	135	1200	12000	
R 104 L 306	300	6	104	60	20	175	135	950	8500	Low profile
104 L 306	300	6	104	110	50	230	135	950	8500	
R 110 L 308	300	8	110	60	20	175	135	1200	12000	Low profile
110 L 308	300	8	110	110	50	230	135	1200	12000	Recommended
110 L 358	350	8	110	130	50	260	135	900	8000	
160 L 358	350	8	160	130	50	300	220	900	8000	Deep profile

- Different outlet diameters on request - heavy duty top covers made from 6/8 mm thick stainless steel plate  
N.B. water seal depth (dimension D) of 50 mm in compliance with standard UNI EN 1253-1



**NOTE:**  
PVC coupling to increase diameter size from 63 mm to 75 mm available  
**Art. 63S75**

**Standard and low profile floor drains with square top plate, horizontal outlet and removable filter basket incorporated into the bell trap (before odor trap).**



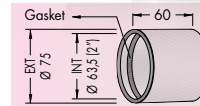
Dwg. No. 0009

N.B. - Round top cover on request **Art. pt.**  
- See page 30 for other cover patterns **Art. ptf.**



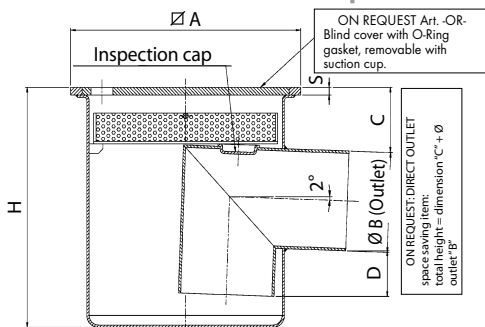
Article	DIMENSIONS IN mm						FLOW RATE lt/min	LOAD CAPACITY IN Kg		
	Ø A	S	Ø B	C	D	H		CONCENTRATED LOAD	DISTRIBUTED LOAD	
R-Low profile										
80 LCE 258	250	8	80	110	50	200	80	1000	10000	
R 104 LCE 258	250	8	104	60	20	175	135	1000	10000	Low profile
104 LCE 258	250	8	104	110	50	230	135	1000	10000	
R 63 LCE 308	300	8	63	60	20	125	60	1000	10000	Low profile
R 104 LCE 308	300	8	104	60	20	175	135	1000	10000	Low profile
104 LCE 308	300	8	104	110	50	230	135	1000	10000	
110 LCE 308	300	8	110	110	50	230	135	1000	10000	Recommended
110 LCE 358	350	8	110	130	50	260	135	850	6500	
160 LCE 358	350	8	160	130	50	300	220	850	6500	Deep profile

- Different outlet diameters on request - heavy duty top covers made from 6/8 mm thick stainless steel plate  
N.B. water seal depth (dimension D) of 50 mm in compliance with standard UNI EN 1253-1



**NOTE:**  
PVC coupling to increase diameter size from 63 mm to 75 mm available  
**Art. 63S75**

**Ultra-low profile floor drains with square top plate, horizontal outlet with odor trap and filter basket**



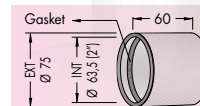
Dwg. No. 0011

N.B. - Round top cover on request **Art. pt.**  
- See page 30 for other cover patterns **Art. ptf.**



Article	DIMENSIONS IN mm						FLOW RATE lt/min	LOAD CAPACITY IN Kg		
	Ø A	S	Ø B	C	D	H		CONCENTRATED LOAD	DISTRIBUTED LOAD	
L 40 25 106	100	6	40	25	15	90	12	1000	10000	Ultra-low profile
L 50 25 156	150	6	50	25	15	105	40	1000	10000	Ultra-low profile
L 63 30 206	200	6	63	30	30	140	60	1000	10000	Ultra-low profile
L 104 40 258	250	8	104	40	50	220	80	1000	10000	Ultra-low profile
L 63 35 308	300	8	63	35	30	140	60	1000	10000	Ultra-low profile
L 110 40 308	300	8	110	40	50	220	135	1000	10000	Recommended
L 160 50 358	350	8	160	50	50	300	210	850	6500	Deep profile

- Different outlet diameters on request - heavy duty top covers made from 6/8 mm thick stainless steel plate



**NOTE:**  
PVC coupling to increase diameter size from 63 mm to 75 mm available  
**Art. 63S75**

Dimensions can be modified on request.

These technical drawings are property of INOXSYSTEM® and cannot be copied or reproduced without our prior written permission.